

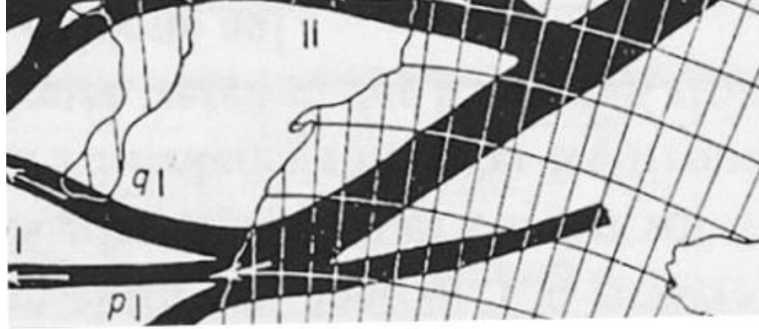
MORE PEOPLE



GATEWAY BEYOND
Opening New Doors

MORE PLACES

BLESSED TO BLESSING



GENESIS 12:2-3

I will make you into a great nation, and
I will bless you; I will make your name great,
and you will be a blessing. I will bless those
who bless you, and whoever curses you I
will curse; and all peoples on earth will
be blessed through you.

A



WE'RE BELIEVING FOR



MORE FAMILIES REDEEMED

Opening new doors to increase the capacity in our campuses, so more people can encounter the love and power of Jesus.



MORE COMMUNITIES RESTORED

Opening new doors to provide practical help in our community, delivered with Jesus' love, through Neighbours, our op shops, care centres and counselling centres.



MORE NATIONS TRANSFORMED

Opening new doors for our Gateway Beyond workers, and to send even more people to take the life-changing message of Jesus to every corner of the world.

We have been truly blessed as a church to be a blessing to people both locally and globally.

Our heart is to open new doors so more people in more places can become fully devoted followers of Jesus.

Join us as we, through His miraculous provision and power, see Him transform the lives of people everywhere.



Jason Elsmore
SENIOR PASTOR



WE LOVE OTHERS BECAUSE HE FIRST LOVED US.



neighbours

Going out to our communities with friendship and practical help to show people they are loved by God.



care centres

Practical help and ongoing connection for people in our campus communities, delivered with Jesus' love.



counselling centres

Professional, affordable mental health services where people can find hope and healing.



op shops

Quality clothing and household items at affordable prices for people in our campus communities.



A MESSAGE FROM CHRISTOPHE:

"My wife and my nine kids are from the Congo. We have been in Australia for eight months. If you are new, you have many problems to understand, to do anything. But Neighbours has helped me—that's why I'm saying thank you!"

A PERMANENT HOME FOR GATEWAY ORMEAU

CAMPUS DEVELOPMENT

“WE WILL TELL
THE NEXT
GENERATION THE
PRAISEWORTHY
DEEDS OF
THE LORD,
HIS POWER,
AND THE
WONDERS
HE HAS
DONE.”

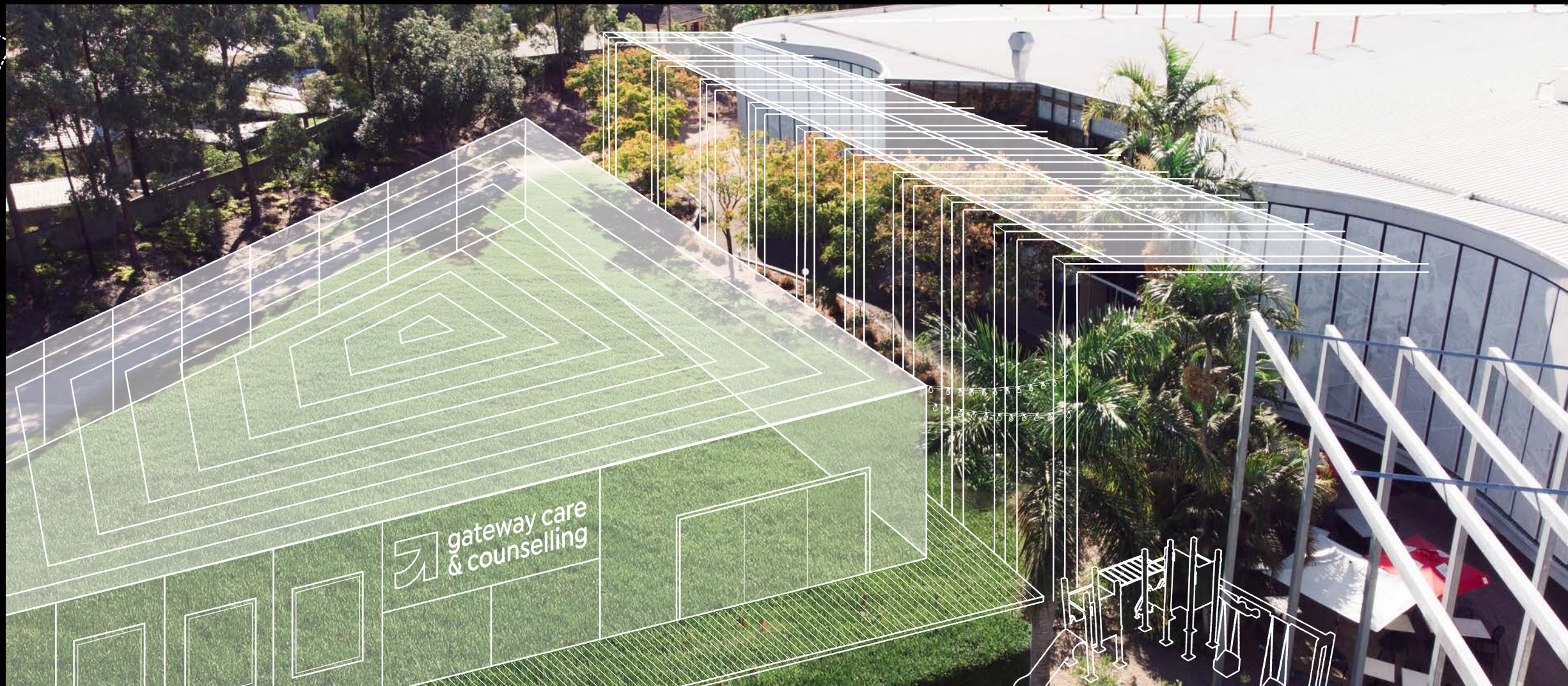
PSALM 78:4B

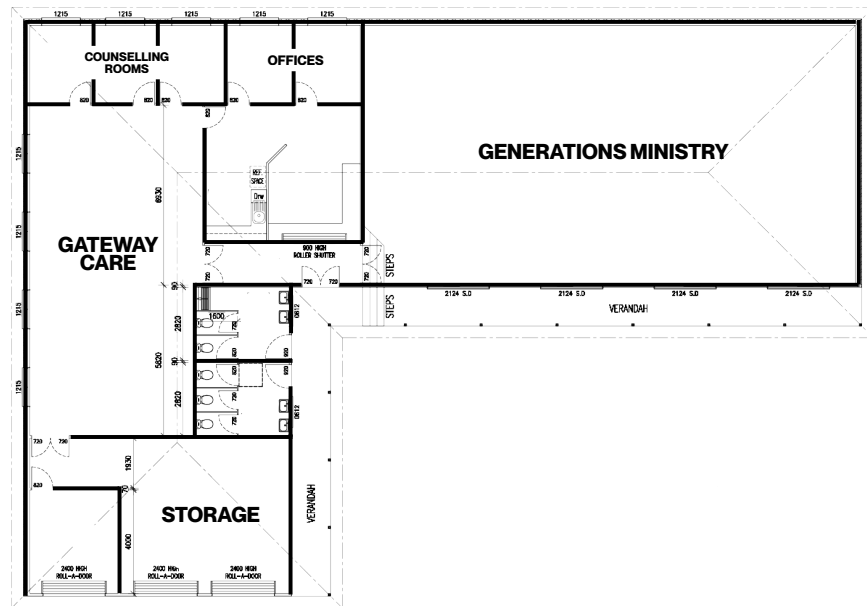
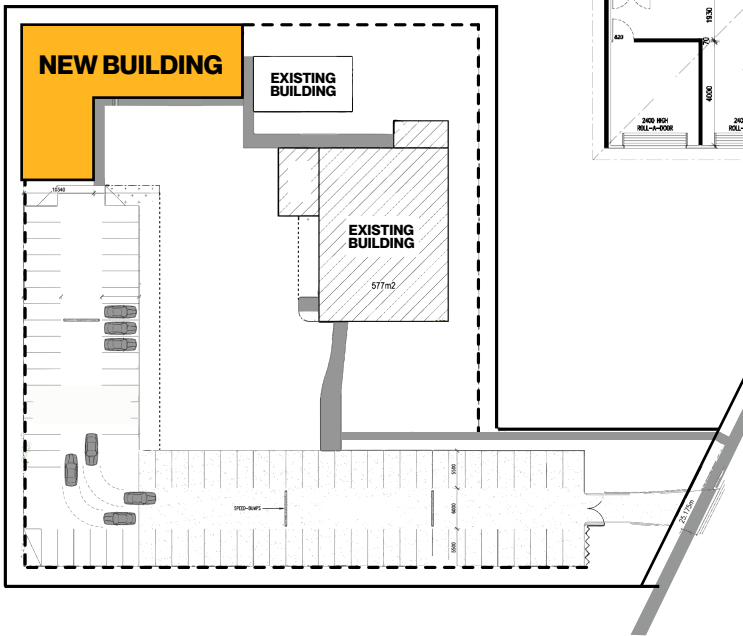
MACKENZIE CAMPUS DEVELOPMENT

A RENEWED SPACE
TO DRAW OUR
COMMUNITY CLOSER

SEAMLESSLY CONNECTING
OUR CARE, COUNSELLING,
HOSPITALITY AND WORSHIP
SPACES TO WELCOME OUR
COMMUNITY AND HELP
THEM FEEL AT HOME.

*ARTIST IMPRESSION





LOGAN CAMPUS DEVELOPMENT

Gateway Logan is bursting at the seams. We are going to build a new space for the next generation to be discipled and for people in need to receive holistic care.



PERMANENT HOMES FOR CITY & REDLANDS

We are blessed with incredible facilities for our Redlands, City and Online campuses. We will keep investing in our campuses so they will continue to be lights in their communities for generations to come.



GOD HAS CALLED OUR CHURCH TO BE A GROWING FAMILY THAT TRANSFORMS COMMUNITIES WITH THE LOVE AND POWER OF JESUS. WHEN THE TIME COMES, WE WILL BE READY TO OPEN NEW DOORS TO REACH THESE COMMUNITIES.





WHOLE FAMILIES REDEEMED

Rough pregnancies, workplace injuries and mental health struggles were just a few of the things life threw at the Carters family over the past few years. But finding out about Gateway Ormeau through a playgroup, Adam and Megan found a new family that welcomed them and supported them through it all.

“Everything I went through, having people praying for me and seeing how everything turned out, it couldn't have been better,” Megan said. “I just knew we were being looked after.”

Coming to church, learning more about faith through Alpha, and experiencing God's love and peace through their circumstances, led Adam and Megan to decide to follow Jesus. They were baptised together at the Ormeau church party in 2022.

“Being in the pool, knowing we were taking that step together, it felt like we were cementing our relationship with each other but also cementing our relationship with Jesus,” Megan said.

A few months later, at the church camp in 2023, they baptised their oldest son, Hunter, in the creek. That day Megan's mum also decided to get baptised.

“I thought it was really cool — I baptised my son and then I baptised my mum, straight after each other.”

Adam said coming to Gateway Ormeau is like coming home. “To the people who decided Ormeau was a good spot to have a new church, I'm so thankful. If we hadn't found Gateway Ormeau, we wouldn't be following Jesus.”

EUROPE & MIDDLE EAST



MELODY



JJM



JANINE

GO INTO ALL NATIONS

AFRICA



BETHANY



NEIL & GWEN*



ANDREW & ANNE*

AUSTRALIA & PACIFIC



TIARNE



TILA



DAN



GEOFF*



NEESH



DAVE & JENNI



JACQUES & KEZ

ASIA



RUTH*



LYNDAL



LISA*



TRISTAN & MEGAN



MORRIS*



ROGER & MONIQUE*



ROB & LIZ



ELSBETH*



STEPHEN & KAREN



MIKE

In mountains and valleys around the world, people have never heard the name of Jesus. Our Gateway Beyond workers are opening new doors to see more people find hope and healing in Him.

"God's presence is always tangible when we are on His mission. His love and provision is evident from the minute we prepare to go, as we minister to the poor, pray for others, and teach and love others. From the big cities to the slums, God's love is evident."

– MONIQUE



2023 GIVING TARGET

\$1.7 MILLION

JOIN US IN MAKING A COMMITMENT TO GATEWAY BEYOND

WHEN WE GIVE, WE OPEN DOORS TO:

- Keep supporting our Gateway Beyond workers around the world
- Equip, train and send more Beyond workers
- Resource care ministries in every campus to keep meeting the needs of their community
- Purchase land and build a permanent worship and ministry home for Gateway Ormeau
- Bring the care centre, op shop and counselling centre at Gateway Mackenzie closer to the heart of the church
- Refresh the hospitality, care and worship spaces at Gateway Mackenzie to create one seamless experience
- Build a care centre and kids and youth building at Gateway Logan
- Invest in the future of our Redlands, City and Online campuses
- Reach more people in more places by planting more campuses



PRAY

Pray about how God is calling you to be involved in the next year.



GIVING CARD

Fill in a giving card and bring it on Commitment Sunday.



COMMITMENT SUNDAY

Celebrate our church's commitment to opening new doors on **Sunday 18 June**.



GIVE ONLINE

Visit gatewaybaptist.com.au/newdoors to give by credit card or direct deposit.



GIVING STATION

Visit the welcome desk to give by credit card, EFTPOS, cash or cheque.



**FOR MORE INFORMATION, OR TO GIVE ONLINE,
VISIT GATEWAYBAPTIST.COM.AU/NEWDORS**